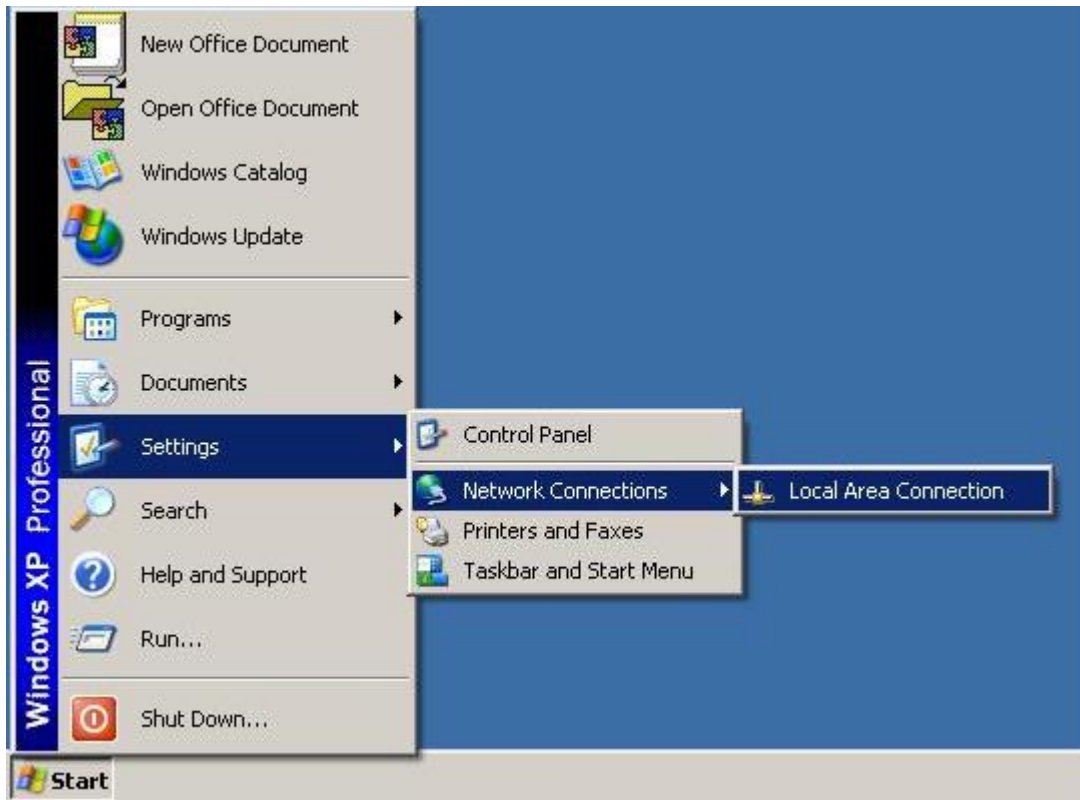
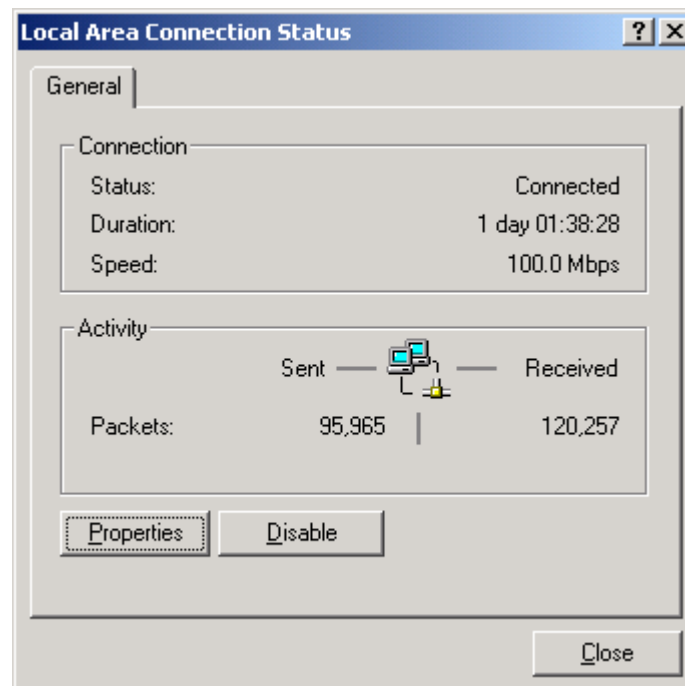


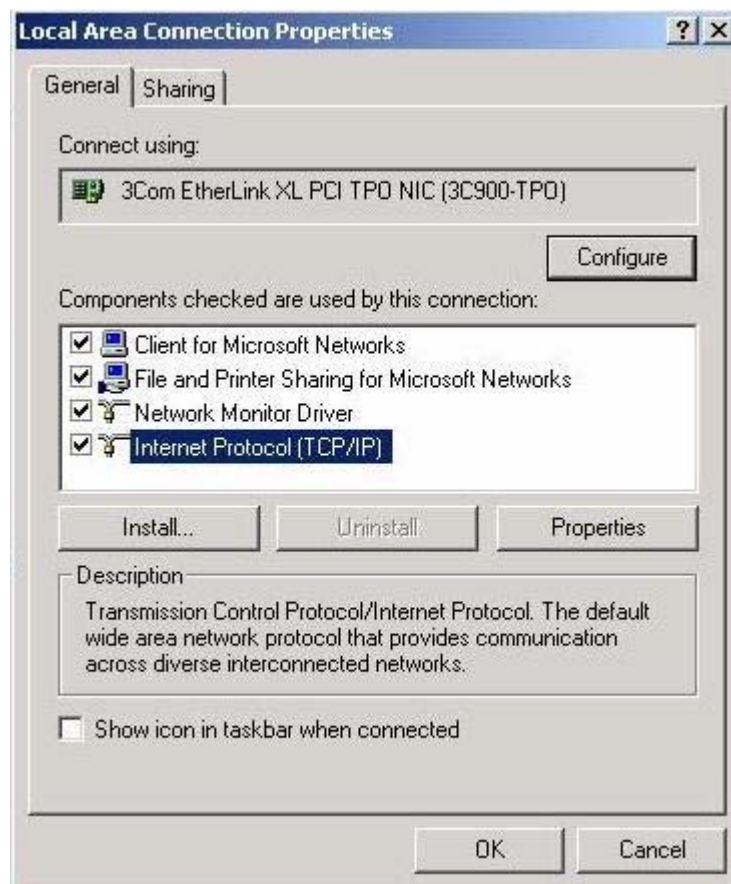
1) Click on **Start > Settings > Network Connections > Local Area Connection**



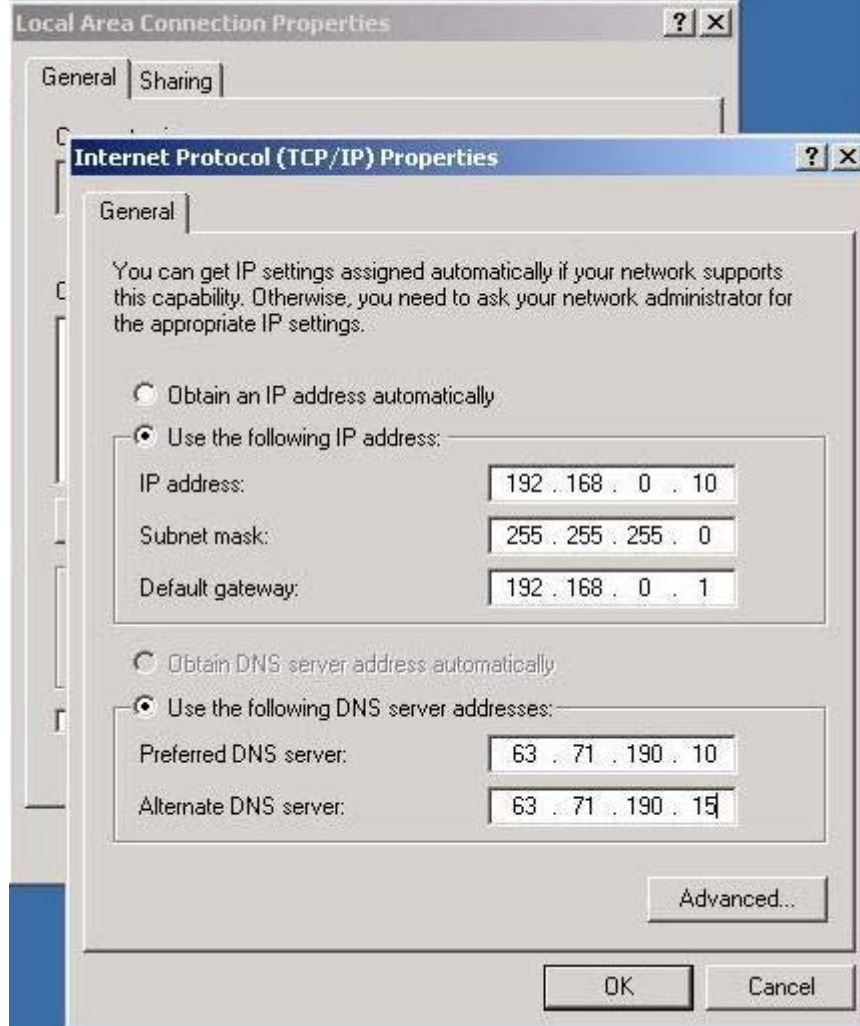
2) Click on **Properties**



3) Make sure **Internet Protocol** is Highlighted and click on **Properties**.



4) If your network has a DHCP server and you wish to receive an IP address automatically, choose **Obtain an IP address automatically, and Obtain DNS server address automatically**. If you want to manually input the settings choose **Use the following IP address** and type in the appropriate address listed on the *Quick Facts*. For DNS, choose **Use the following DNS server addresses** and input *Primary Name Server* and *Secondary Name Server* for the city closest to your location. Finally click **OK**. Contact your network administrator for which option you should choose.



<b>Telepacific Communications: Select the DNS servers that correspond to your Location.</b>		
<b>Location</b>	<b>Primary</b>	<b>Secondary</b>
Los Angeles/Orange Counties-CA	64.60.0.17	64.60.0.18
Bay Area	66.7.224.17	66.7.224.18
San Diego County-CA	216.70.224.17	216.70.224.18
Las Vegas-NV	209.58.224.17	209.58.224.18

5) You will be brought back to the **Local Area Connection Properties** window. Click OK.

