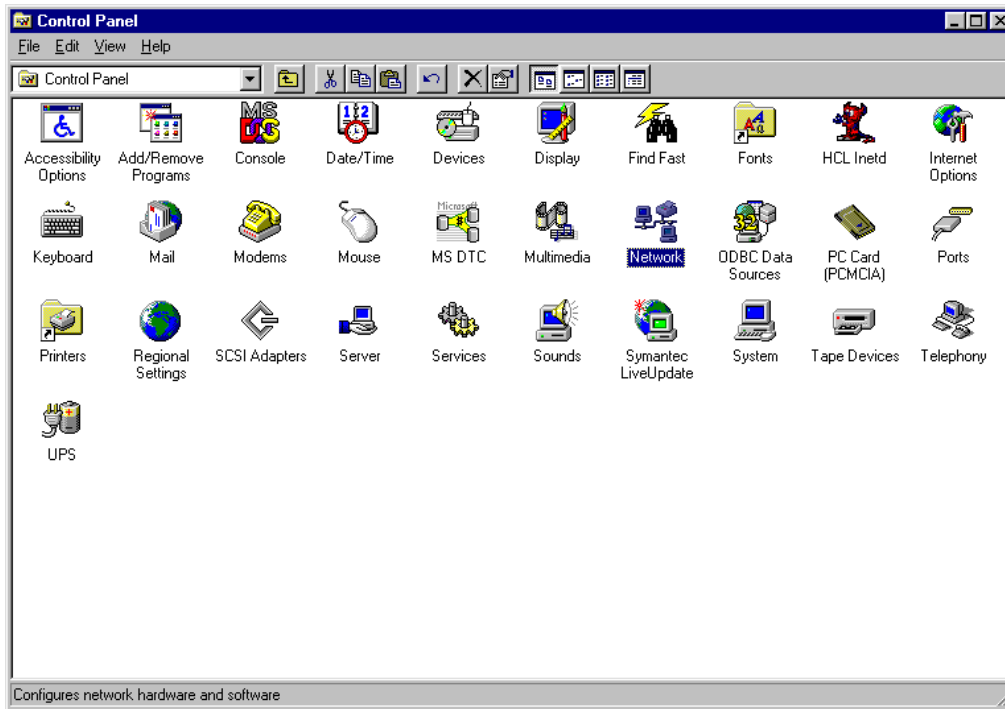
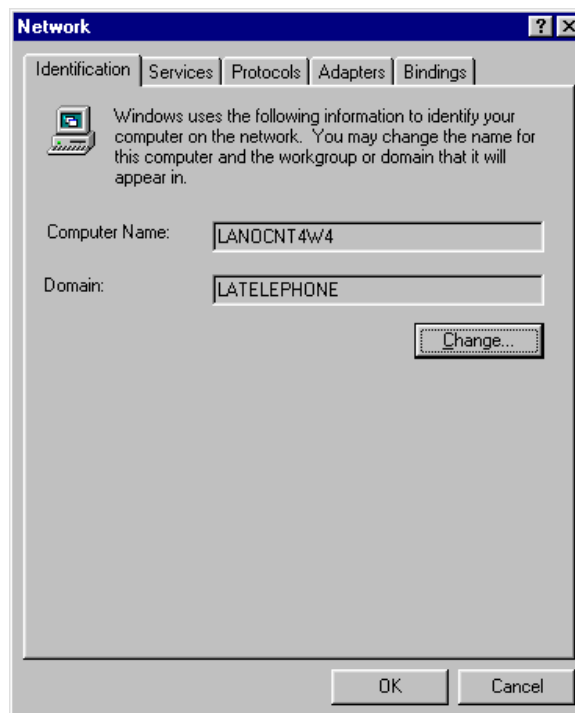


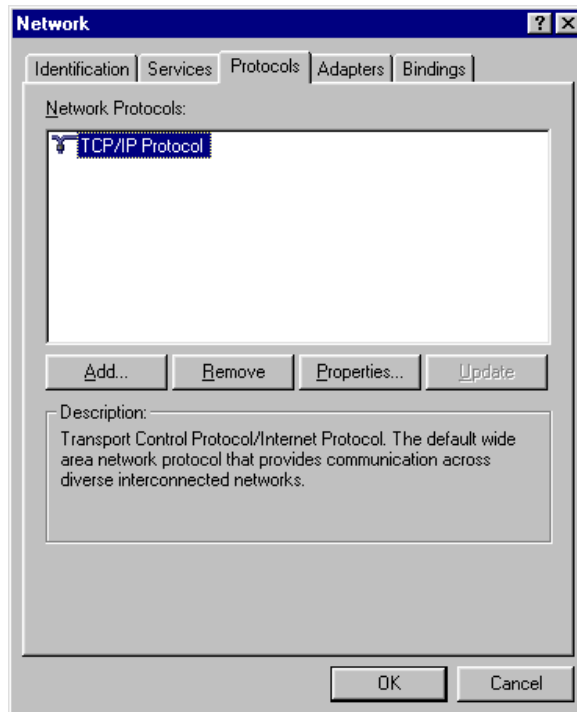
- 1) Click Start → Settings → Control Panel
- 2) Double click the **Network** icon.



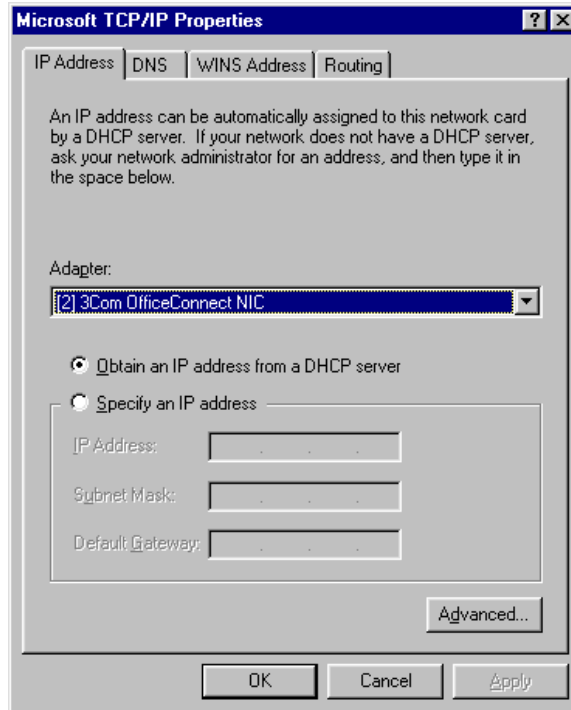
- 3) Click on the **Protocols** tab when the **Network** applet appears.



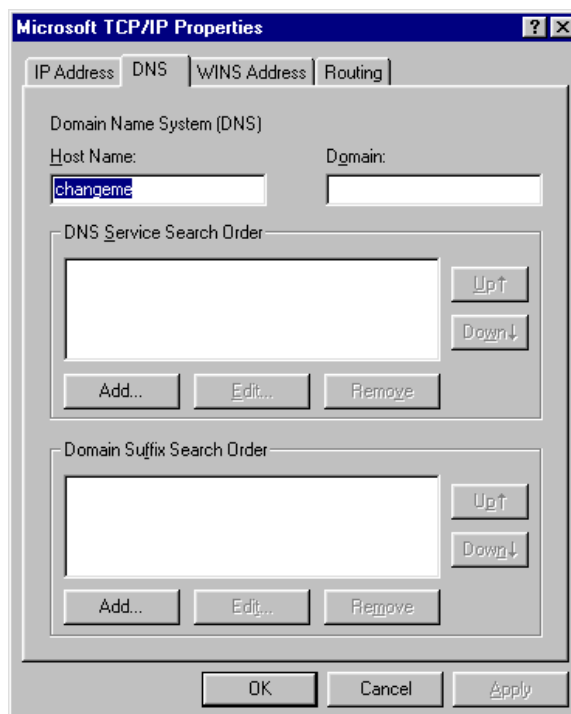
4) Click and highlight **TCP/IP Protocol**. Click on **Properties**. If you do not see **TCP/IP Protocol** listed, then go to “Installing TCP/IP” on page 16.

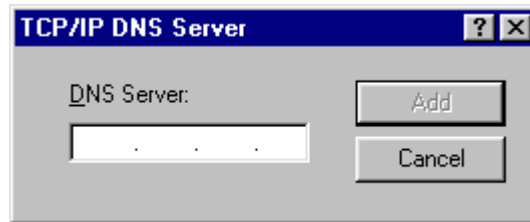


5) If your network has a DHCP server and you wish to receive an IP address automatically, choose **Obtain an IP address from a DHCP server**. If you want to manually input the settings choose **Specify an IP address** and type in the appropriate address listed on the *Quick Facts*. Contact your network administrator for which option you should choose.



6) Click on the **DNS** tab and type in your domain name given by your network administrator for the **Domain:**. If your network administrator does not specify, input *telepacific.net* for **Domain:**. Next for **DNS Service Search Order**, click **Add**, the **TCP/IP DNS Server** window will appear, input *Primary DNS Server* for your city and then click **Add**; then input *Secondary DNS Server* for your city and click **Add**. Finally click **OK**.





<b>Telepacific Communications:</b> Select the DNS servers that correspond to your Location.		
<b>Location</b>	<b>Primary</b>	<b>Secondary</b>
Los Angeles/Orange Counties-CA	64.60.0.17	64.60.0.18
Bay Area	66.7.224.17	66.7.224.18
San Diego County-CA	216.70.224.17	216.70.224.18
Las Vegas-NV	209.58.224.17	209.58.224.18

7) You will be brought back to Protocol tab with TCP/IP Protocol listed in the **Network Protocol** box. Click **Close**.



8) **Network Settings Change** will prompt for a restart. Click **Yes** to restart your computer.



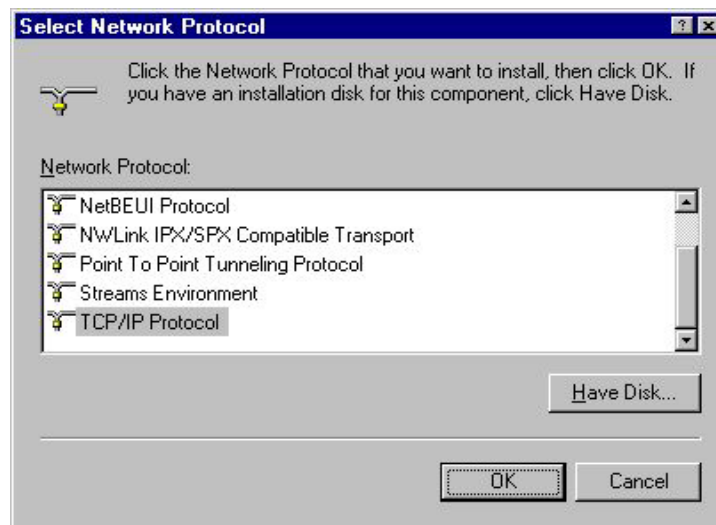
## Installing TCP/IP for Windows NT

Perform the following steps only if you were referred from step four.

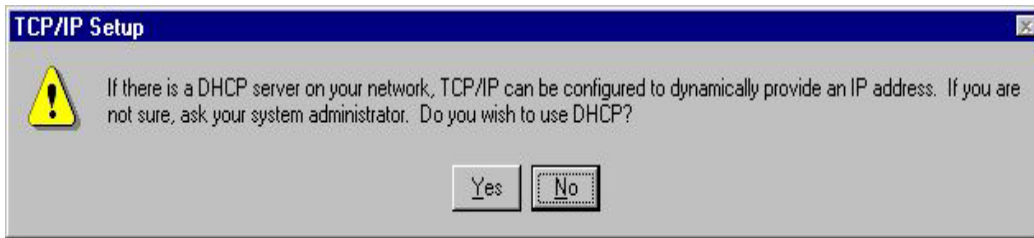
- 1) Click on the **Add**.



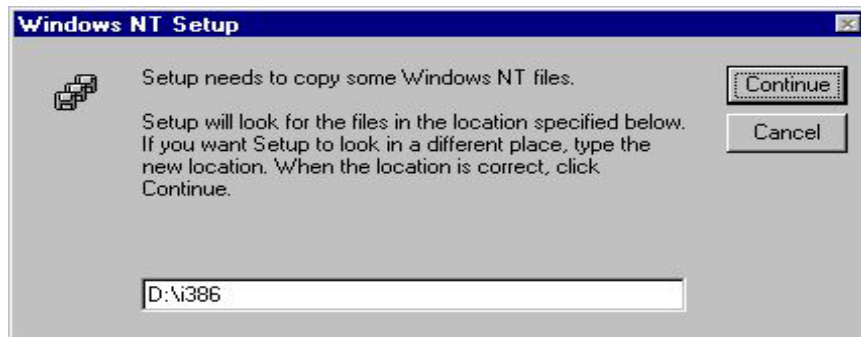
- 2) From the list of Network Protocols, select **TCP/IP Protocol**.



3) Click the **OK**. If you are asked whether you wish to use **DHCP**, ask your administrator. If your administrator wishes you to input manually go to step five on page 14, other wise click **NO** to proceed to the next step.



4) You may be asked for a Windows NT CD-ROM. Make sure the path to the i386 directory on the CD is correct.



5) You will be brought back to **Protocol** tab with **TCP/IP Protocol** listed in the **Network Protocol**: box. Go back to step four on page 13.

