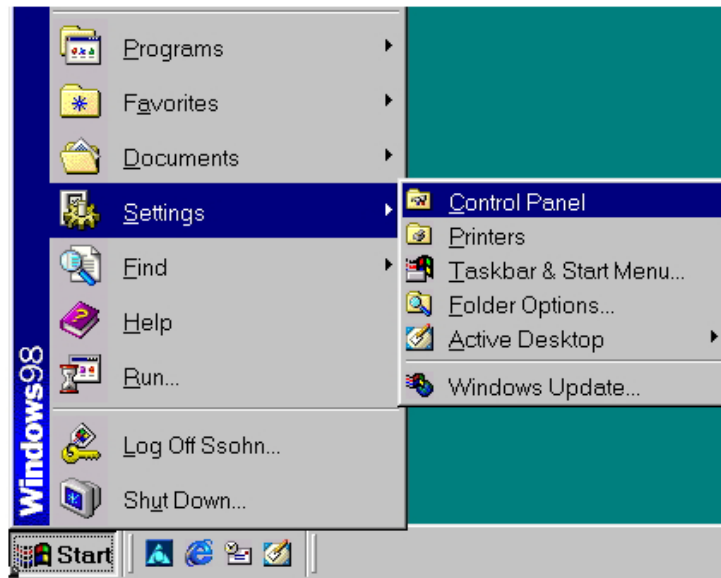
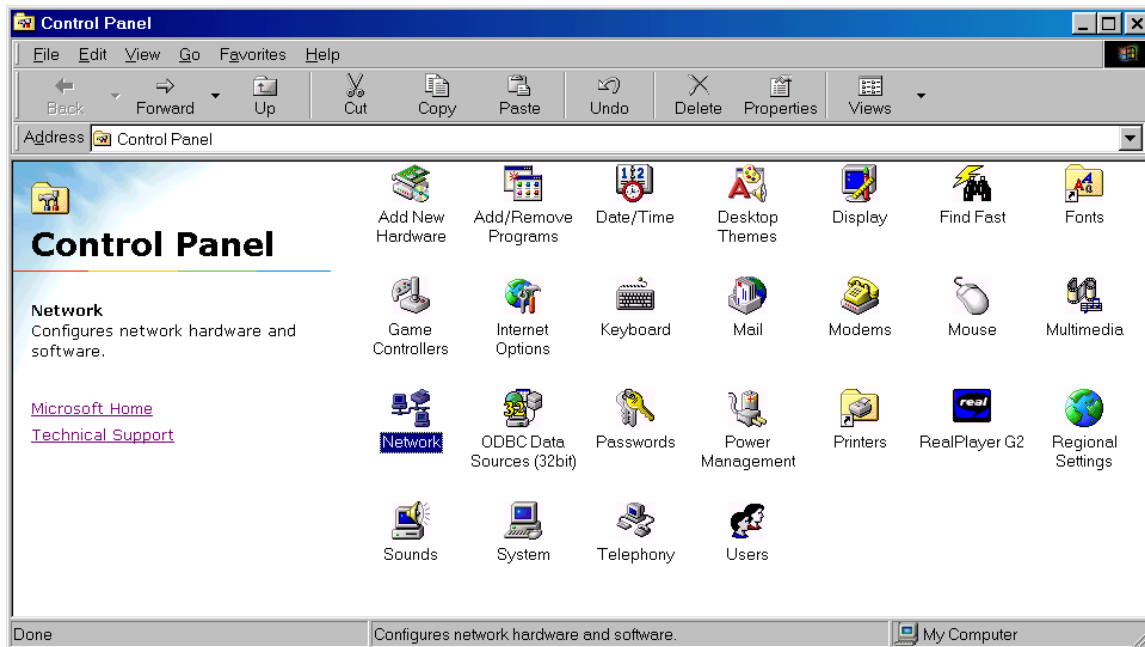


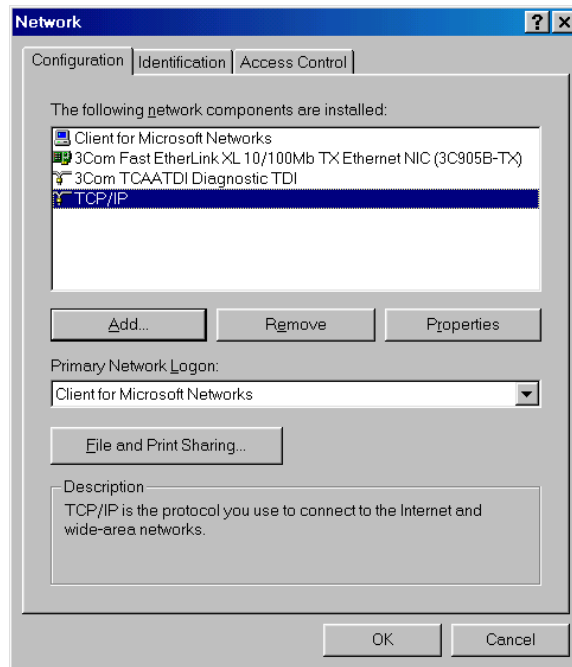
1) Click **Start** → **S**ettings → **C**ontrol Panel



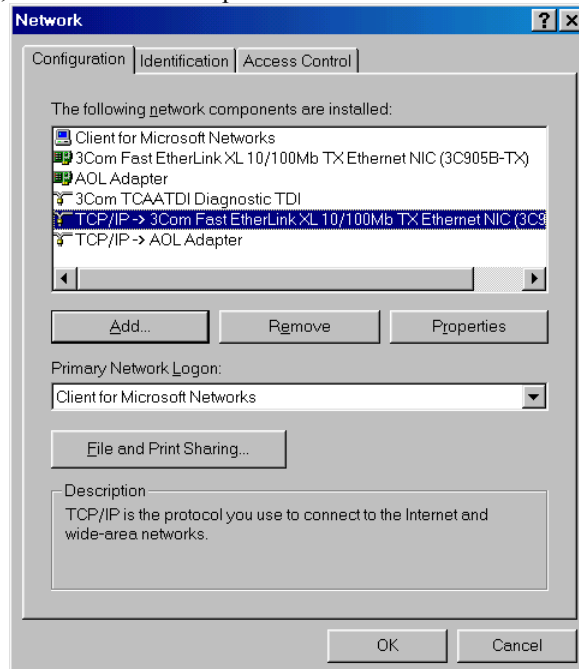
2) Double click the **Network** icon.



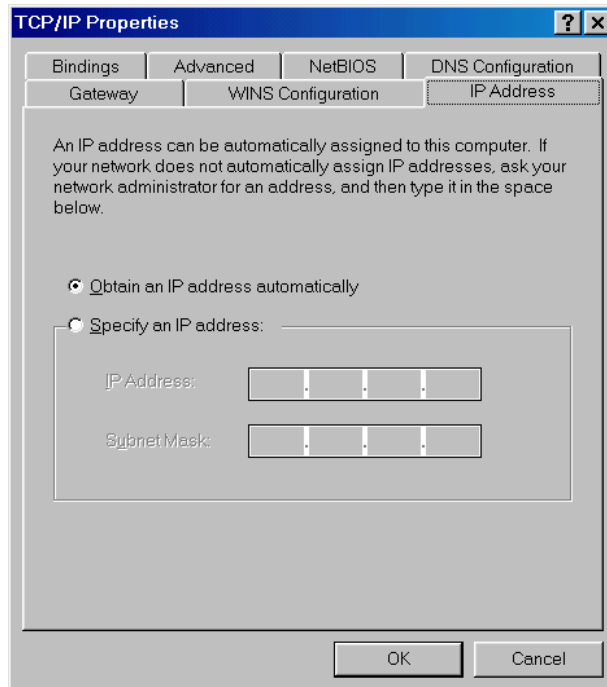
3) Stay on the **Configuration** tab when the **Network** applet appears. Click and highlight **TCP/IP** then the **Properties**. If you do not see the **TCP/IP** Protocol listed, then go to *Installing TCP/IP* on page 9.



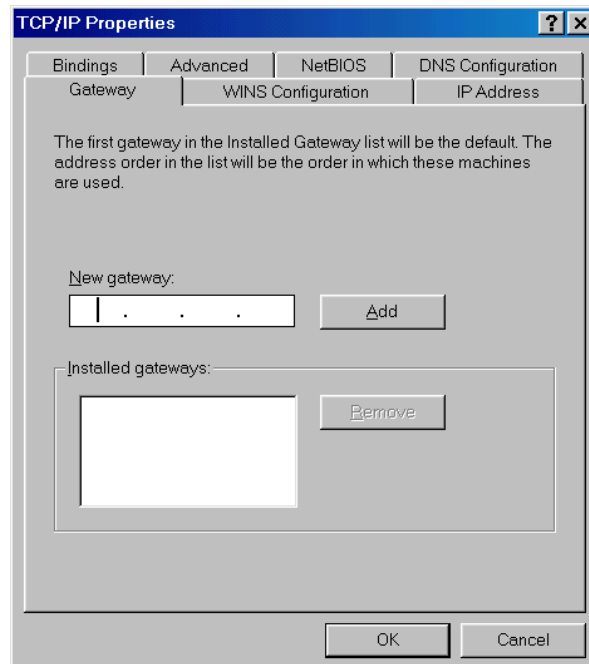
If you have multiple network adapters, as shown in the picture below, you will see TCP/IP bound to these adapters. Choose the TCP/IP protocol bound to your Ethernet Network Interface Card (NIC) and then click **Properties**. The keyword in identifying your Ethernet NIC is to make sure it has the word “Ethernet” or “NIC.” In this scenario, I chose the TCP/IP protocol bound to a 3Com Ethernet NIC.



4) If your network has a DHCP server and you wish to receive an IP address automatically, choose **Obtain an IP address automatically**. If you want to manually input the settings choose **Specify an IP address** and type in the appropriate address listed on the *Quick Facts*. Contact your network administrator for which option you should choose.

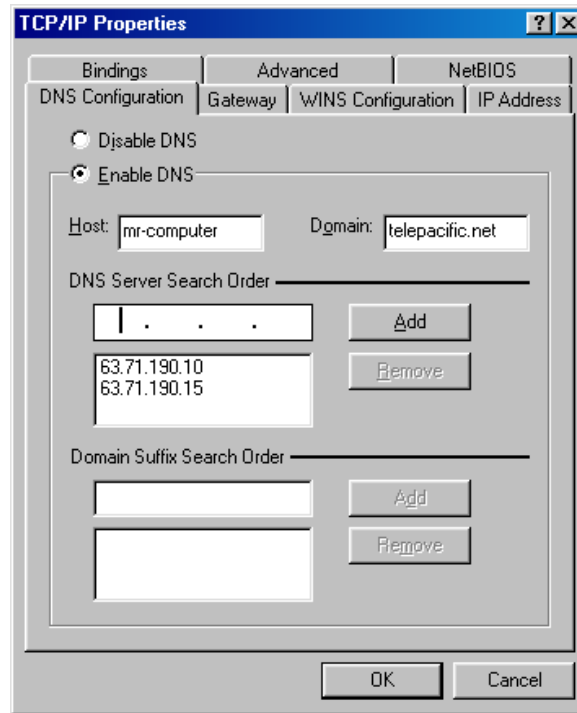


5) Click the Gateway tab. Input the default gateway IP address from the *Quick Facts* for **New Gateway**: then click Add

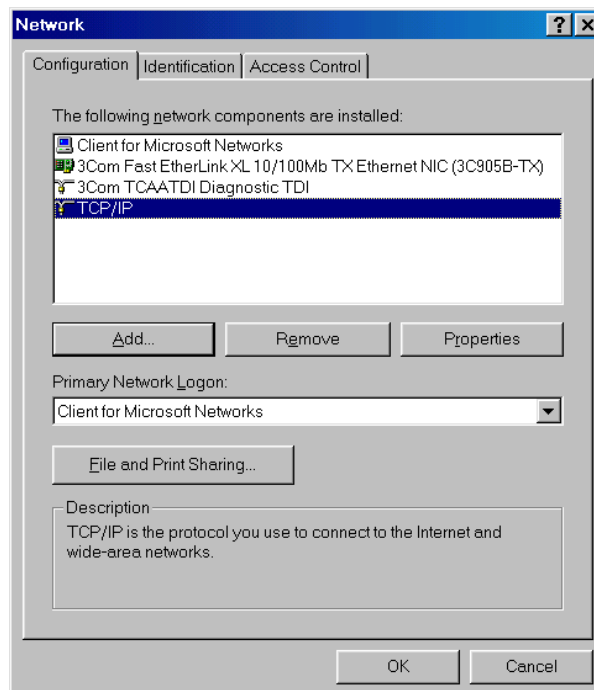


6) Click the **DNS Configuration** tab, check the **Enable DNS** radio button and type in your domain name given by your network administrator for the **Domain:**. If your network administrator does not

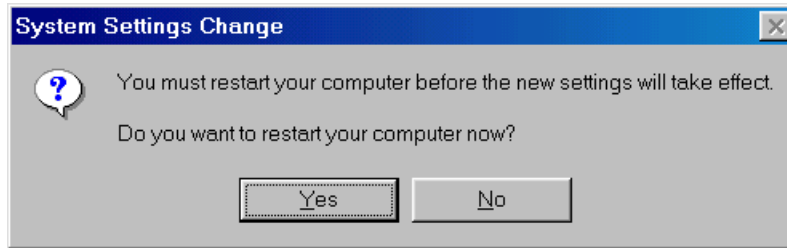
specify, input *telepacific.net* for **Domain:**. Next for **DNS Service Search Order**, input 63.71.190.10 then click **Add**, next input *63.71.190.15* then click **Add**. Finally click **OK**.



7) You will be brought back to **Network** applet. Click **OK**.



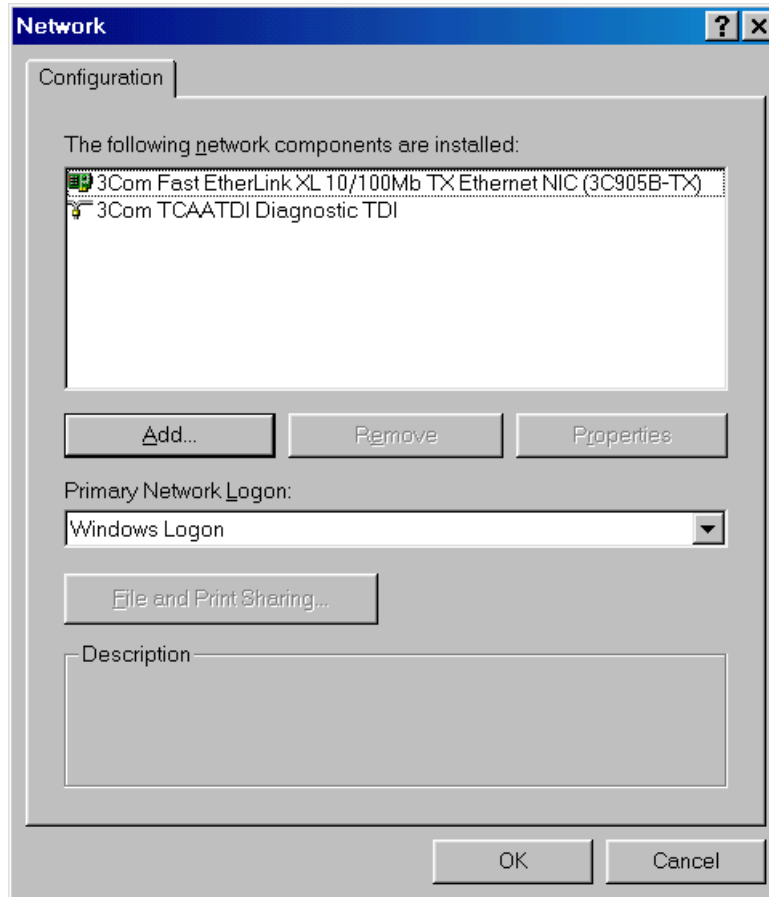
8) **Network Settings Change** box will prompt for a restart of the computer. Click **Yes** to restart your computer.



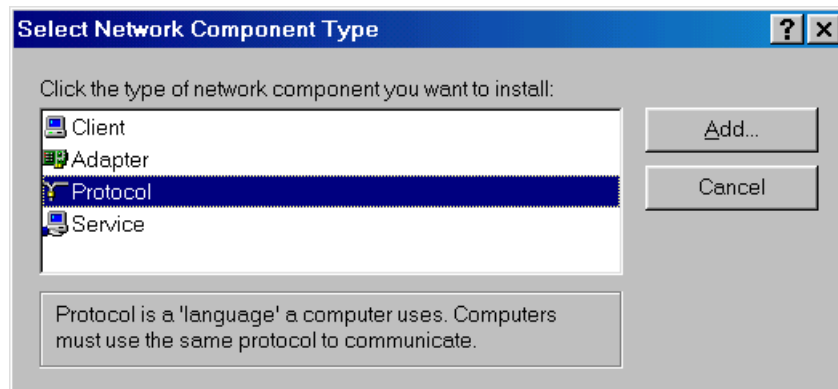
Installing TCP/IP for Windows 9x

Perform the following steps only if you were referred from step three.

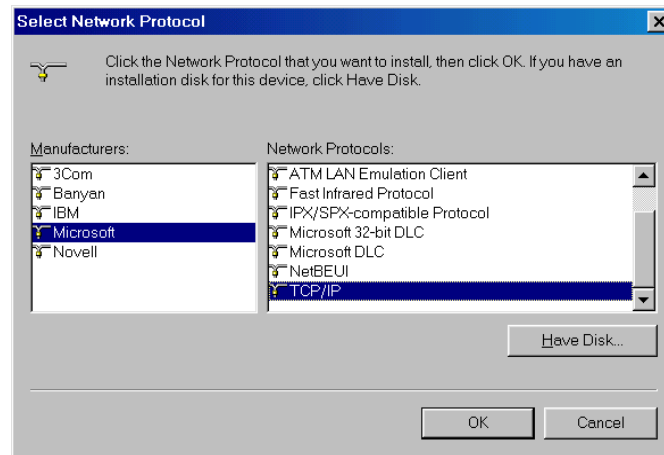
1) Click **Add**.



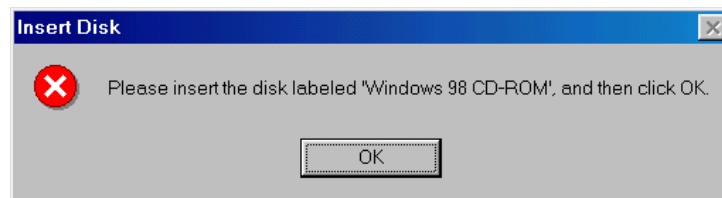
2) From the list of network components, select **Protocol** then click **Add**.



3) Select **Microsoft** from **Manufacturers**: then scroll down and select **TCP/IP** from the **Network Protocols**:. Lastly click **OK**.



4) You may be asked for your Windows 9x CD-ROM. If you are using Windows 95, be sure that you supply the same version of Windows 95 CD-ROM to avoid a version conflict. Since there are several Original Equipment Manufacturer Service Releases (OSR) of Windows 95, contact your network administrator for the correct version of Windows 95 CD-ROM. **Supplying a different version of the Windows 95 CD-ROM may cause your system to crash due to version conflict.**



5) You will be brought back to **Configuration** tab of the **Network** applet. Go back to step three on page 5.

