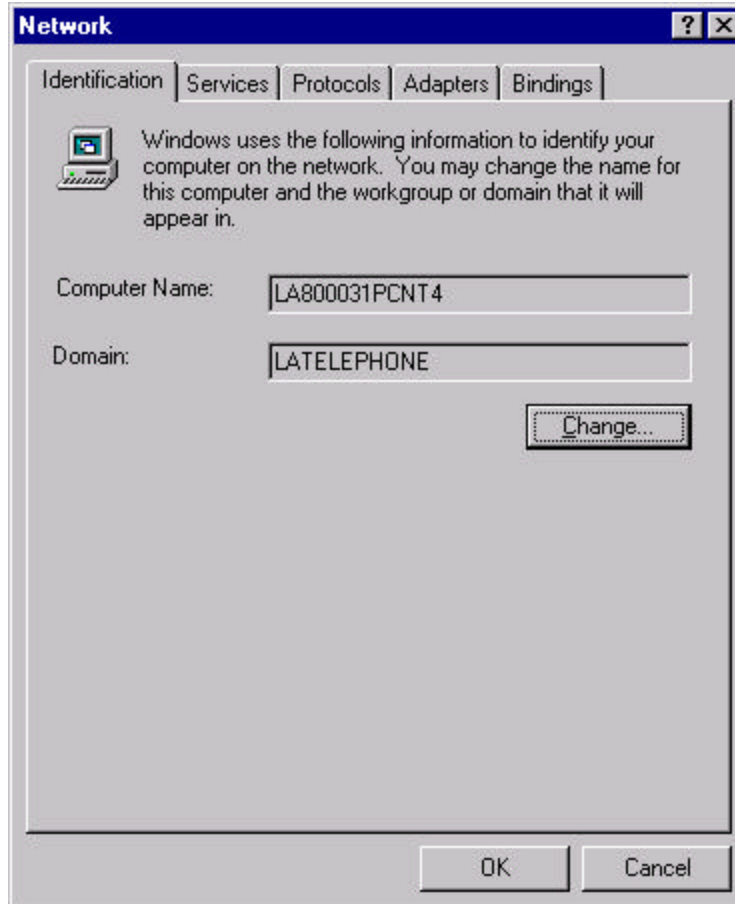
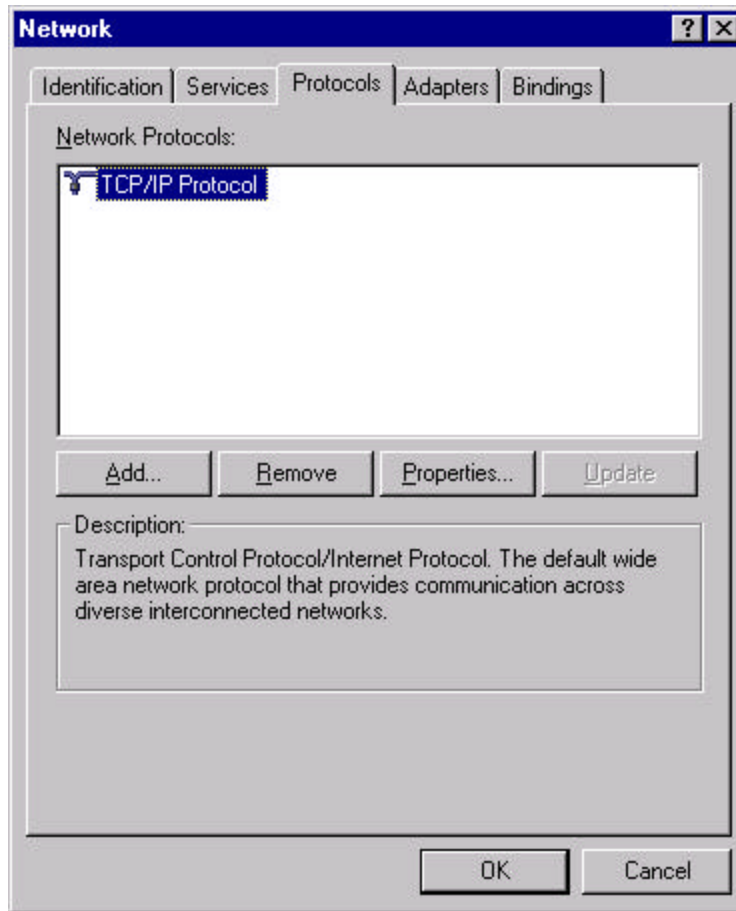


Changing DNS IP Setting for Windows NT 4.0

Step 1) Right Click on "Network Neighborhood icon" on your desktop then left click properties. Window below will pop up.

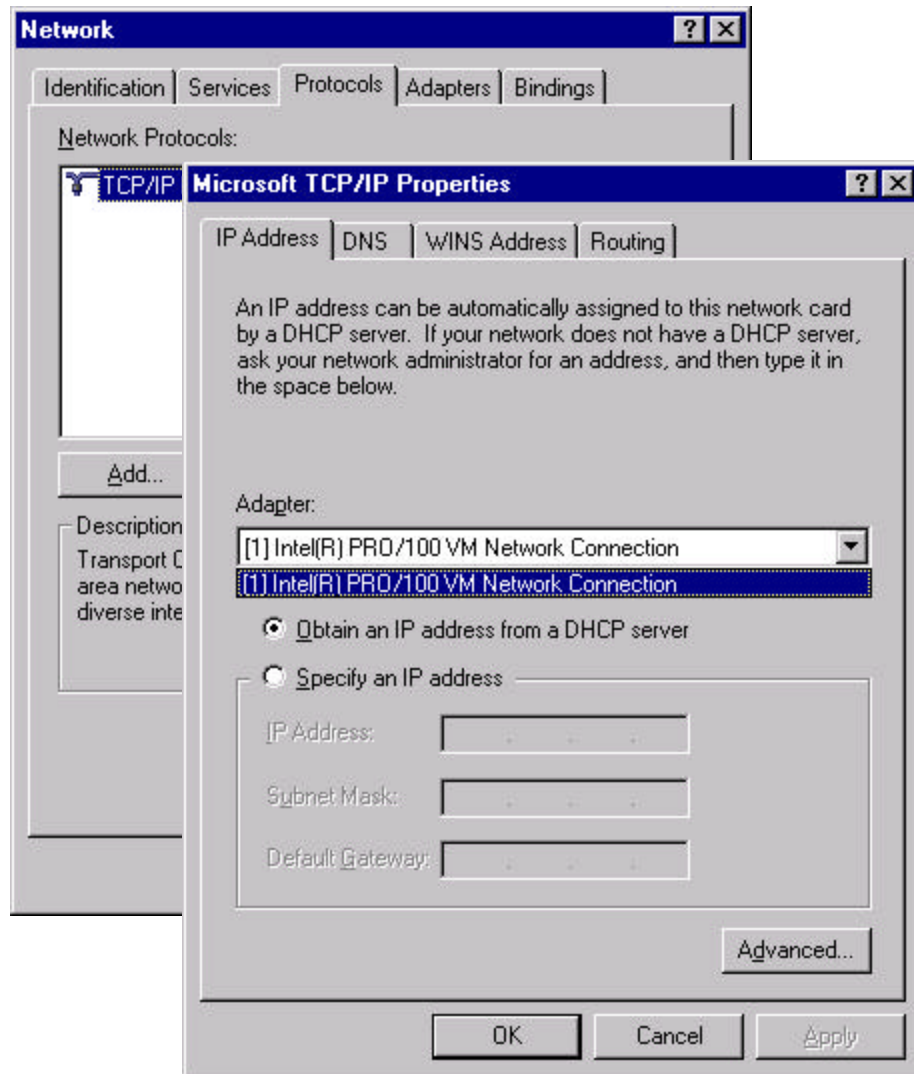


Step 2) After window pops up select the "Protocol" Tab and highlight the "TCP/IP Protocol" option. Then click on the "Properties button".



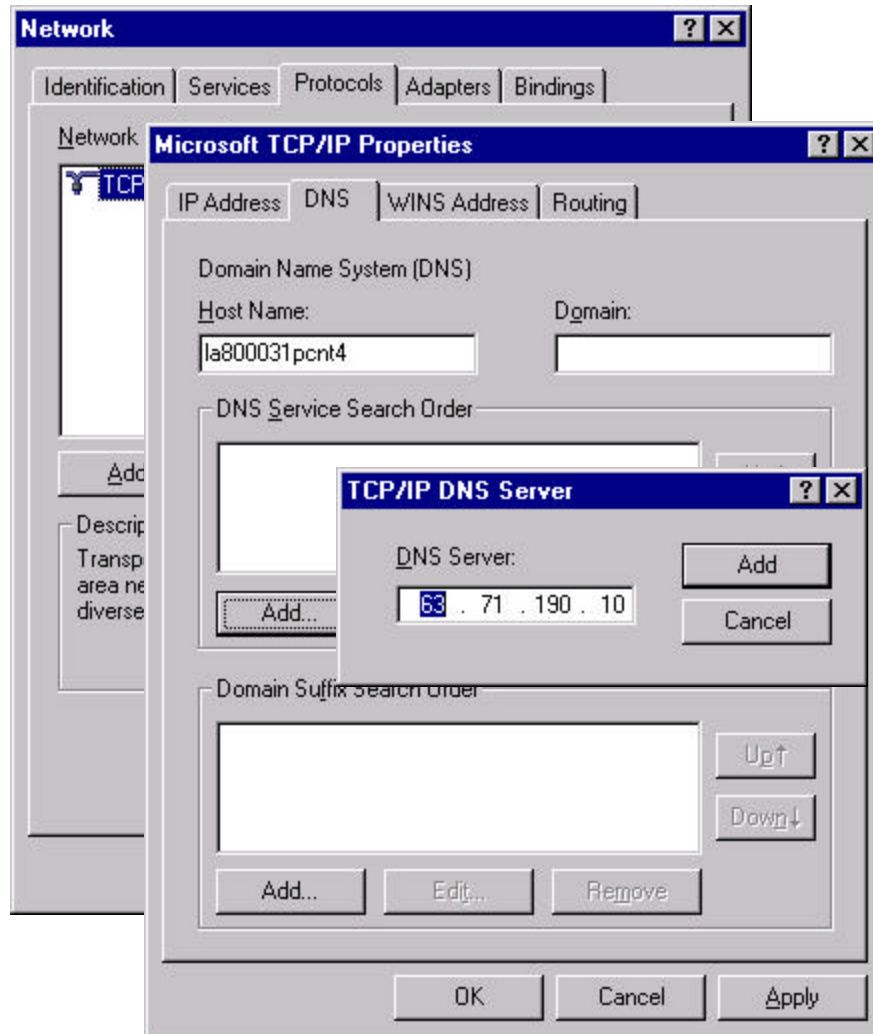
Step 3) After you click on the "Properties button" another window should pop open over the previous window. Then proceed below to the Adapter menu and click the down arrow and select your Network Card you are using on your PC.

Note: You may only have one selection to choose from. Then just leave it as it is and move onto the next step. If you have multiple selections ask your Network Administrator to find out which Network Card your PC is using.



Step 4) Click on the "DNS Tab" and your window should look like this below. Then proceed and click on the "Add.." button under the "DNS Service Search Order" section. Another small window "TCP/IP DNS Server" will appear after you click the button. Properly fill in the IP Address you are assigned and then click the "Add" button. You will then notice that the IP address you filled in will populate the "DNS Service Search Order" Box. Repeat to add a second DNS server IP address.

Note: If you make a mistake in the IP address simply Highlight the IP address in the field and click remove.
Note: DO NOT click the "Add" button on the Domain Suffix Search Order.



Step 5) After you properly fill in the DNS IP addresses click on the "Apply" button then click on the "OK" button all the way out until all the windows you opened are gone.