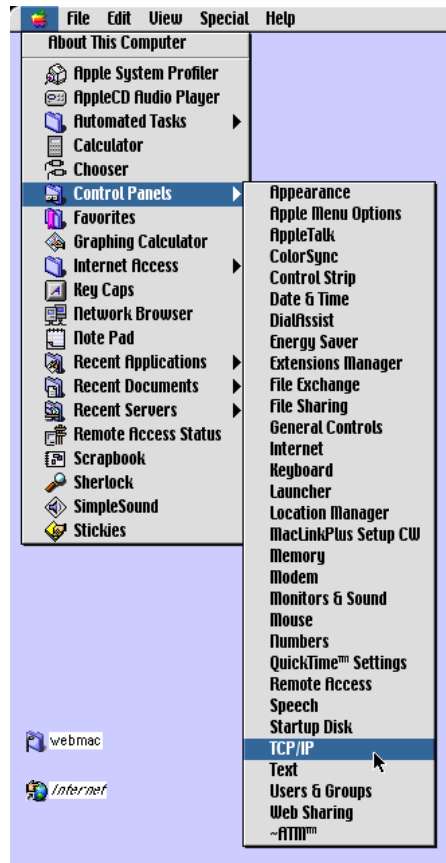
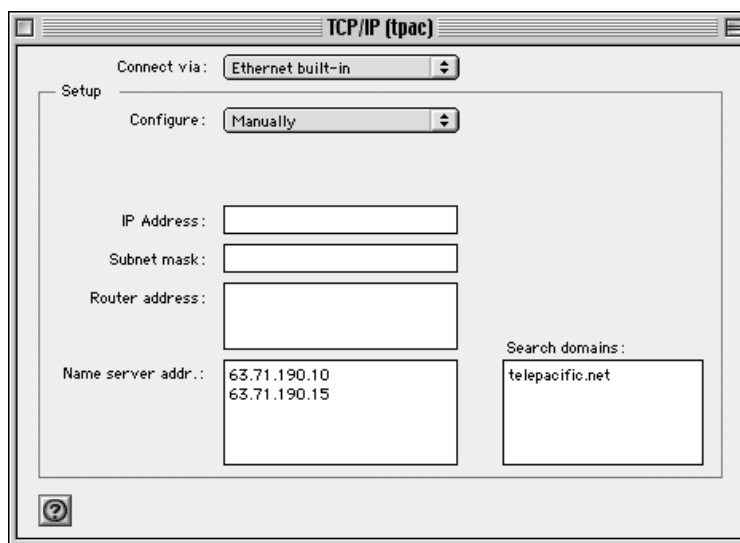


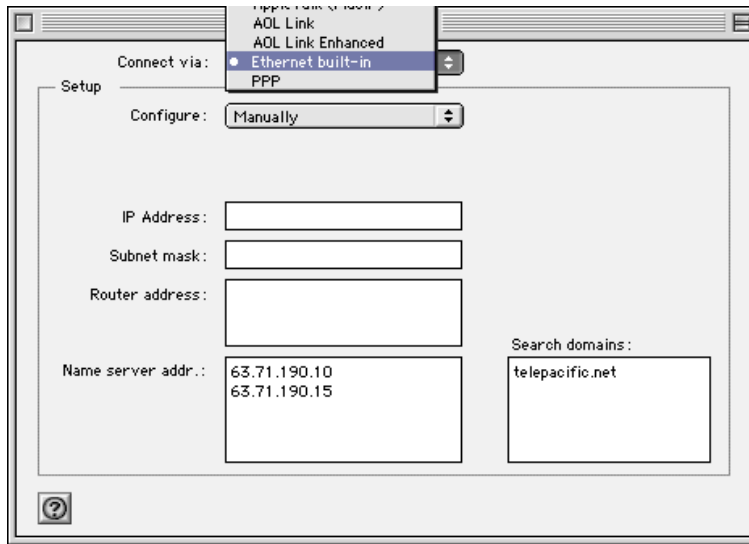
1) Click Apple Icon → Control Panel → TCP/IP



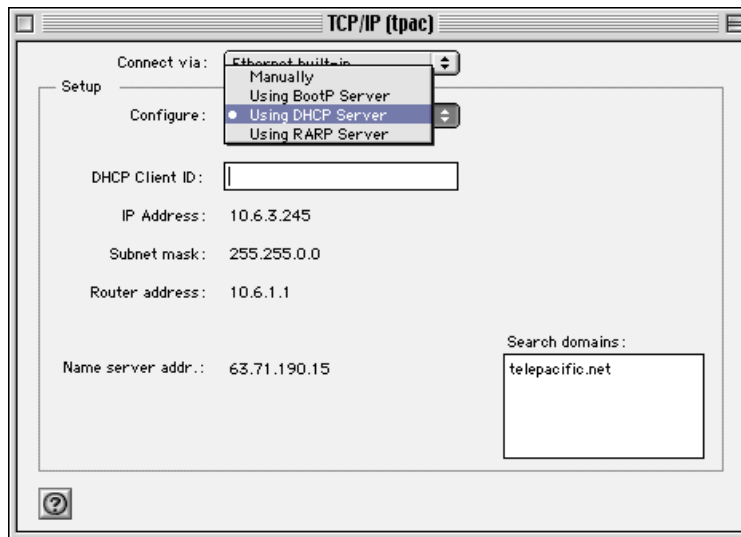
2) The TCP/IP Window will appear



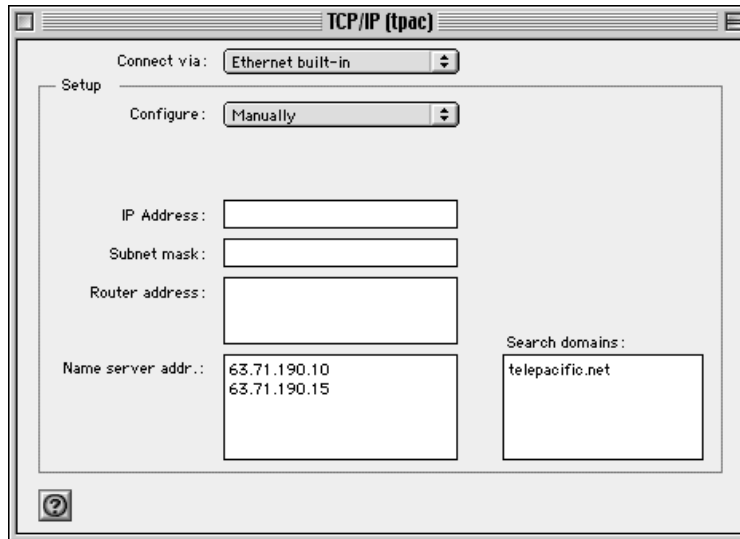
3) Be sure to select your Ethernet adapter in the **Connect via:**.



4) If your network has a DHCP server and you wish to receive an IP address from it, choose **Using DHCP server** for the **Configure:** option. If you want to manually input the settings choose **Specify an IP address** and type in the appropriate address listed on *Quick Facts*. Contact your network administrator for which option you should choose. For our example we will manually input the TCP/IP settings.



5) Enter **IP Address:**, **Subnet mask:**, and **Router address:** with the information given on the *Quick Facts*. Input **Primary Name Server** and **Secondary Name server** for the city closest to you, in the **Name server addr.:** field, and **telepacific.net** for **Search domains:**.



Telepacific Communications:		
Select the DNS servers that correspond to your Location.		
Location	Primary	Secondary
Los Angeles/Orange Counties-CA	64.60.0.17	64.60.0.18
Bay Area	66.7.224.17	66.7.224.18
San Diego County-CA	216.70.224.17	216.70.224.18
Las Vegas-NV	209.58.224.17	209.58.224.18

6) Shutdown and restart your computer.